



**Suburban
Water Systems**

A SouthWest Water Company

Welcome!

Water Wise Landscape Workshop

July 27, 2022



Today's Topics

- Why?
- Where Do I Start?
- Form Follows Function
- Color
- Water Wise Plants
- Irrigation
- Mulch
- Helpful Hints
- Garden Checklist
- Resources



Water Wise Landscaping



Why?

- To save water
- To save money
- We're in a drought – again
- Provide habitat
- Enhance your life



Where Do I start?

- Education
- Make a decision
- Be disciplined

Are you an educated gardener?

- Visit a professional garden
 - Chino Basin Water Conservation District
 - California Botanic Garden - \$
 - Los Angeles County Arboretum and Botanic Garden - \$
 - Take a garden tour
 - Look in your own neighborhood
-
- Start small



Climate Zones

- Sunset Magazine
- <https://www.sunsetwesterngardencollection.com/climate-zones/>
- USDA Hardiness Zones
- Enter your address
- <https://planthardiness.ars.usda.gov/>
- Don't waste your money or time



Form Follows Function

What is the function of your garden?

- Family meeting area?
- Play area?
- Relaxation?
- Art project?
- None of these?

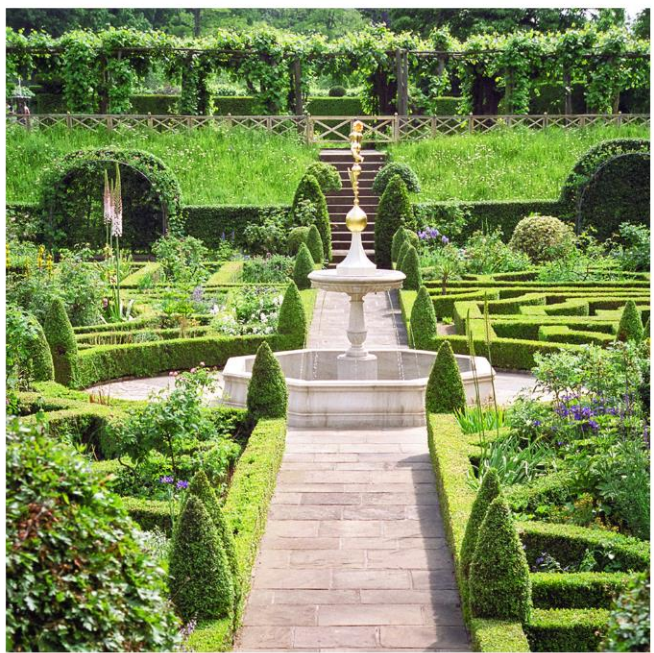


A Word About Color



Color sets the tone of your landscape

- Nothing provides flow like color
- Hot Colors
 - Reds – Yellows
- Cool Colors
 - Blues – Pinks
- White makes everything pop
- Green is your neutral
- Less color is more formal
- DO NOT pick every color
- Don't be a specimen gardener



Water Wise Plants



California Fuchsia

Native vs. Drought Tolerant
There's a big difference!

Natives:

- Here "forever" or naturalized
- Only 2% are from the cactus family
- Need no fertilizer
- Need no supplemental water once established
- Generally low maintenance
- Don't like drip
- Highly adaptable
- Are planted in the fall
- Attract local birds, bees, and butterflies



Woolly Blue Curls



Water Wise Plants



Native vs. Drought Tolerant
There's a big difference!

Drought Tolerant Plants:

- Australia
- Mediterranean coastal areas
- May bloom on different schedule
- Provide interest
- Like drip irrigation
- Generally low maintenance
- Can be planted in the fall
- Can be mixed with natives



My Favorite Natives



Pink Muhly



California Lilac



Penstemon - Margarita Bop



Cleveland Sage



Yarrow



California Buckwheat

My Favorite Natives



Monkeyflower



California Poppy



Sugar Bush



Dudleya



Agave



Desert Mallow

My Favorite Natives



Island Snapdragon



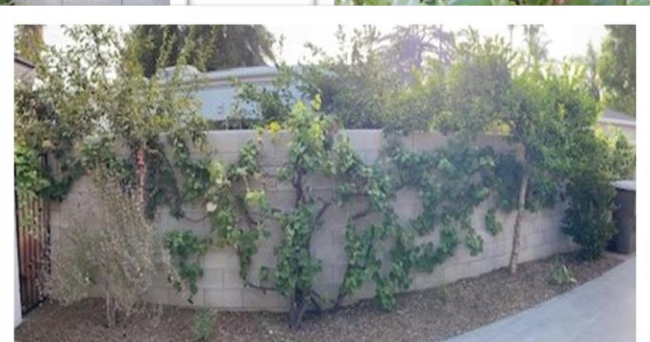
Bush Mallow



Verbena



CA
Grape



My Favorite Drought Tolerant Plants



Rose



Citrus



Lavender



Bougainvillea



Grevillea



African Daisies

My Favorite Drought Tolerant Plants



Salvia



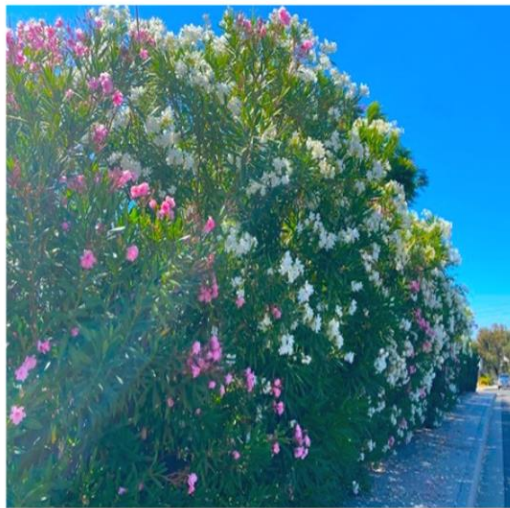
Strawberry Tree



Cistus



Lamb's Ear



Oleander



Crepe Myrtle

Turf Alternatives



Creeping Thyme



Yarrow



Dymondia – Silver Carpet

Irrigation

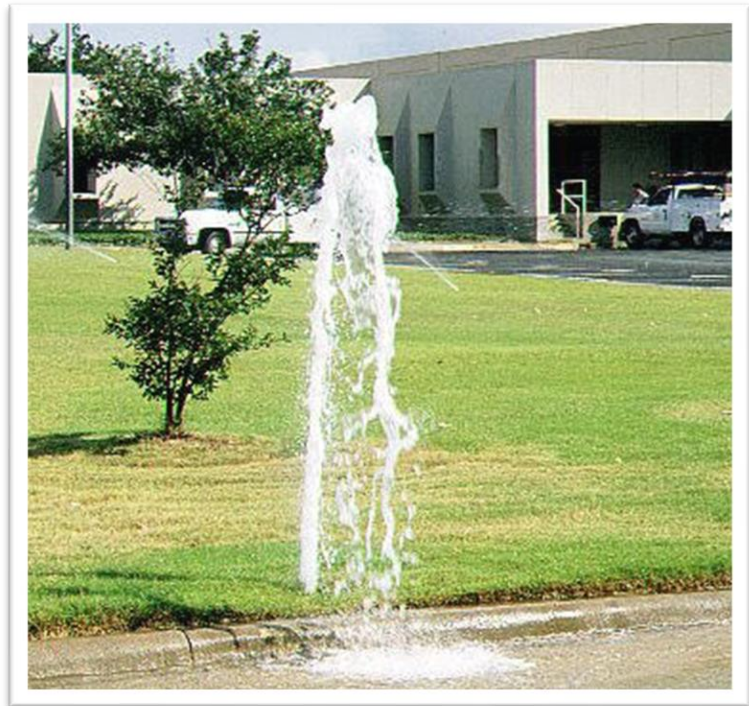


Water Are You Doing?

Irrigation

Four Key Points

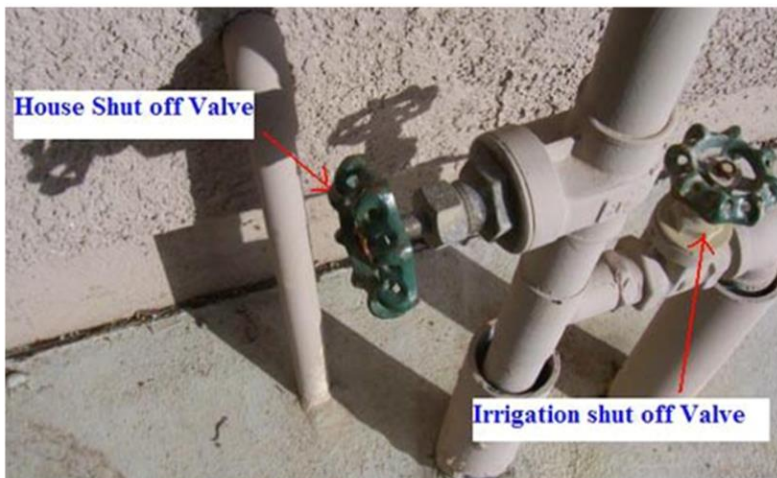
1. Plants drive irrigation, not the other way around.
2. Choices are hand, spray, or drip.
3. Water management is critical.
4. Poor watering practices are a safety hazard.



Irrigation Parts and Types

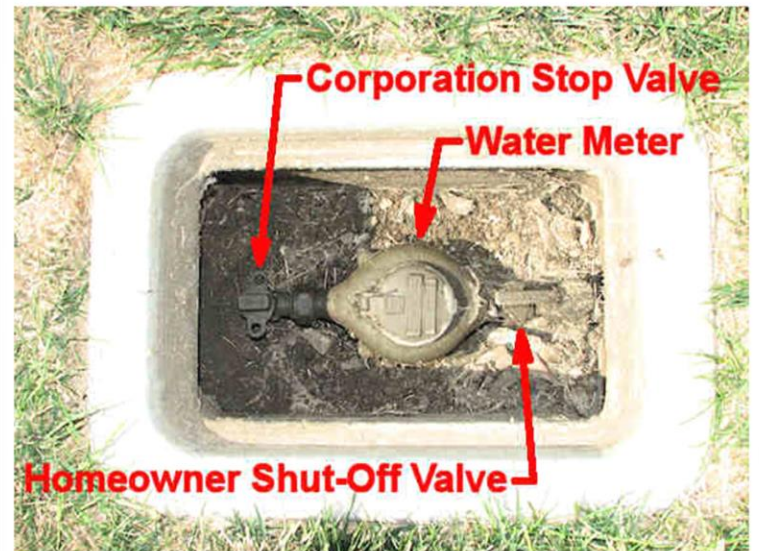


Control valves



House Shut off Valve

Irrigation shut off Valve



Corporation Stop Valve

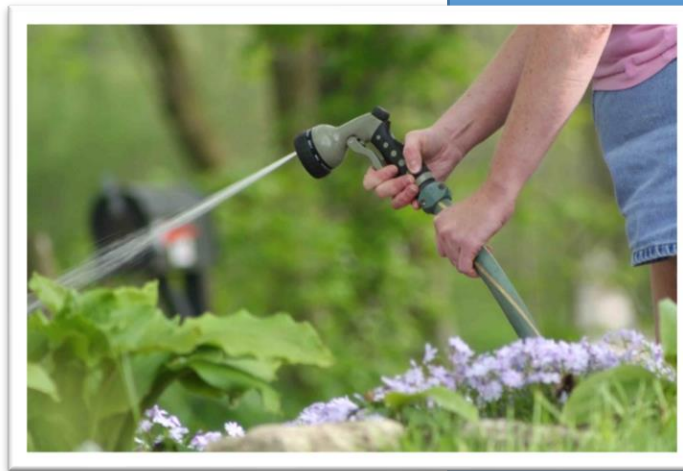
Water Meter

Homeowner Shut-Off Valve

Hand Watering

Dedicated gardeners do this.

- This method rarely wastes water
- In tune with landscape
- Takes time



Overhead Spray



- Traditional head
- Solid stream of water
- Water lost to evaporation
- "Old fashioned"
- Uses about 75 gallons an hour



- Rotating head
- Slower stream of water
- Bigger drops
- More efficient
- Uses about 30 gallons an hour

Point to Point Drip Options



Irrigation System Check



- Watch your system run
- Check for spray uniformity
- Grow your grass tall
- Fertilize grass 3 times a year
 - spring, summer, fall
- Don't mix and match sprinkler heads
- Use a pressure regulator
- Flush your drip system
- Check for chewed bubblers



Drip – uses about .25 – 2 gallons an hour

- Two types:

- Inline
- Filter built in
- Works well with inline plants
- Waters empty spaces
- Not adjustable
- Easier
- Cheaper

- Point to point
- Most efficient
- Adjustable
- Can pop off
- Waters plant only
- Offers variety

- Both are prone to chewing



Irrigation Controller

Many different manufacturers

- Rain sensor
- Cell phone app
- Wifi based for real time information
- Knows wind, daylight hours, and temperature
- Adjusts accordingly
- Manage yourself



Mulch

The single most important thing you can do

- 3 inches deep
- Not too close to the plant or your house
- Immediately reduces need for water
- Reduces weeds
- Purchase from a landscape store



Helpful Hints

- Protect yourself
 - Gloves
 - Arm guards
 - Hat
 - Protective eye wear
- Tools
 - Buy the best tools you can afford
 - Use power tools if you need to
 - Store them properly
- Do a little at a time
- Don't work in the heat of the day
- Hire someone



Garden Checklist

1. What is the function of your garden?
2. What is the approximate size of the area you would like to change?
3. Do you want a focal point in your garden?
4. Will children or dogs be using the garden on a regular basis?
5. Do you need a BBQ/eating area?
6. Are your favorite colors hot or cold?
7. Do you have parties?
8. What is your maintenance preference?
Low, medium, or high?
9. How about a water feature?
10. Do you plan on doing the work yourself?
11. If you plan on hiring out some of the work, which part is that?
12. Are you a patient person?
13. Do you prefer formal or informal settings?



Resources

For more information and tips on water efficiency:

- Suburban Website: <https://www.swwc.com/suburban>
- SoCalWaterSmart Website: <https://socalwatersmart.com>

For more information and tips on landscaping solutions:

- Be Water Wise
www.bewaterwise.com
- California Native Plant Society
<https://www.cnps.org/gardening>
- California Invasive Plant Counsel
www.cal-ipc.org
- Sunset Climate Zones
<https://www.sunsetwesterngardencollection.com/climate-zones/>
- USDA Climate Zones
<https://planthardiness.ars.usda.gov/>
- loukeh@outlook.com





Thank you!

**Please fill out an
evaluation form**